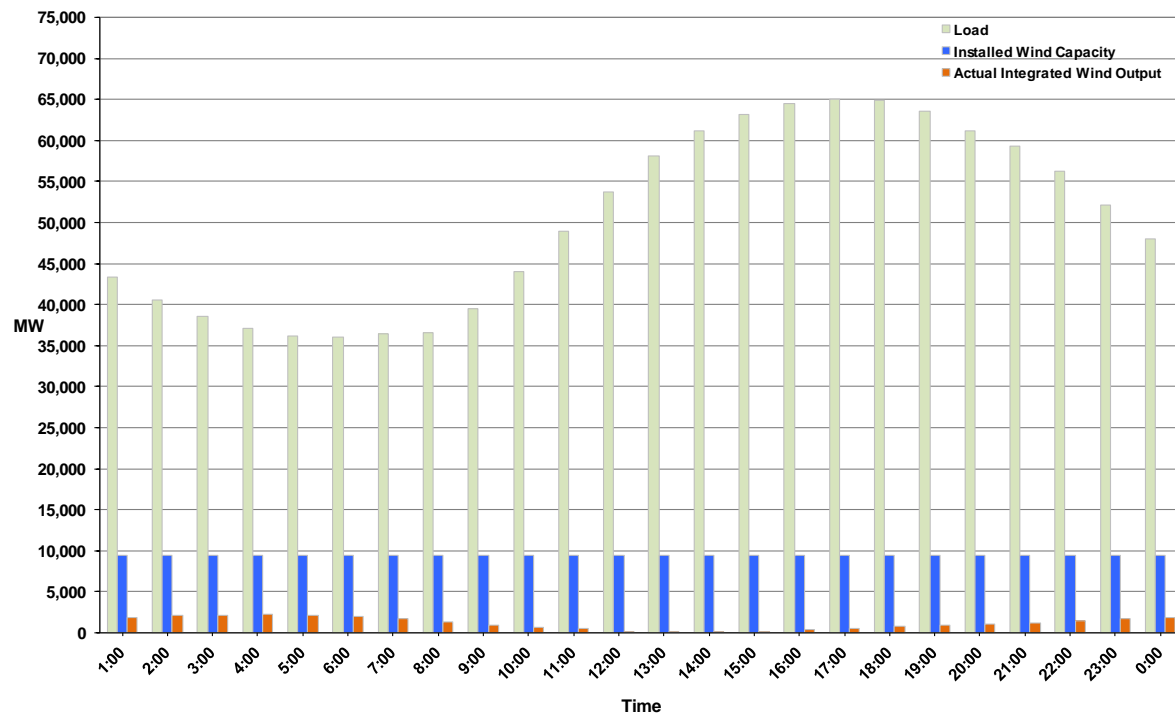




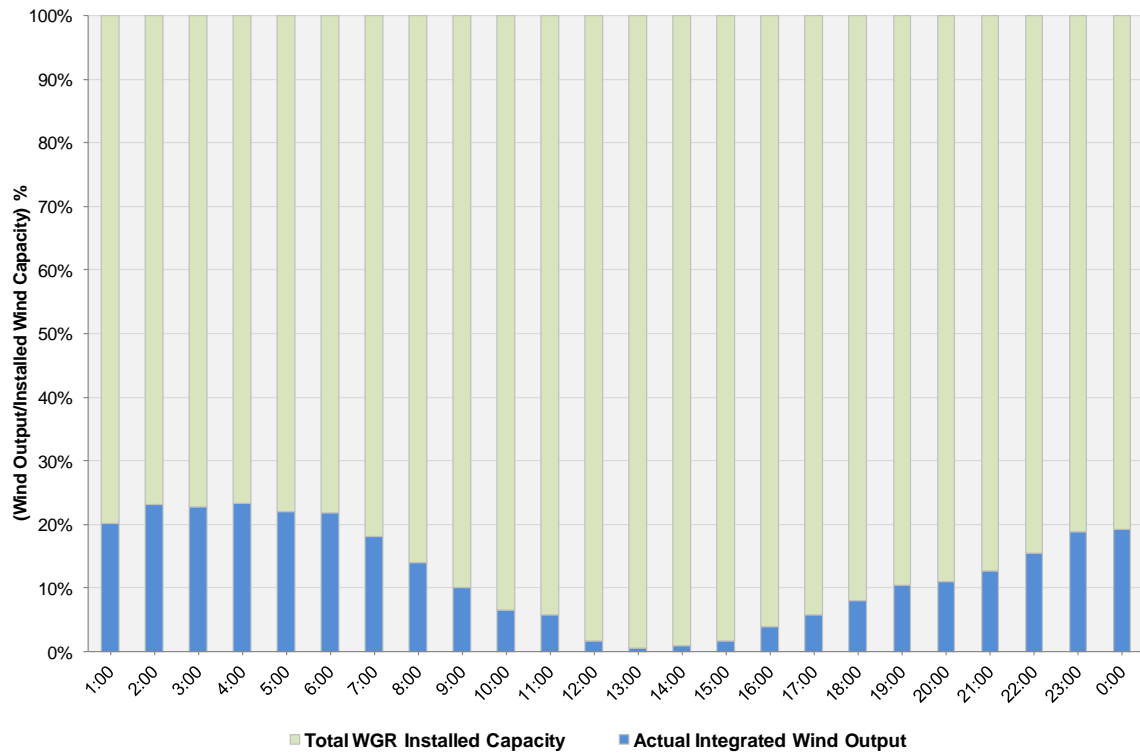
## ERCOT Grid Operations Wind Integration Report: 08/27/11

Peak Load	<b>65,101 MW</b>
Load Peak Hour	<b>17</b>
Wind over Peak	<b>543 MW</b>
Wind Record 06/19/11	<b>7,355 MW</b>
Max Wind Value	<b>2,268 MW</b>
Wind Peak Time	<b>03:34:00</b>
Wind Integration %	<b>6.14%</b>

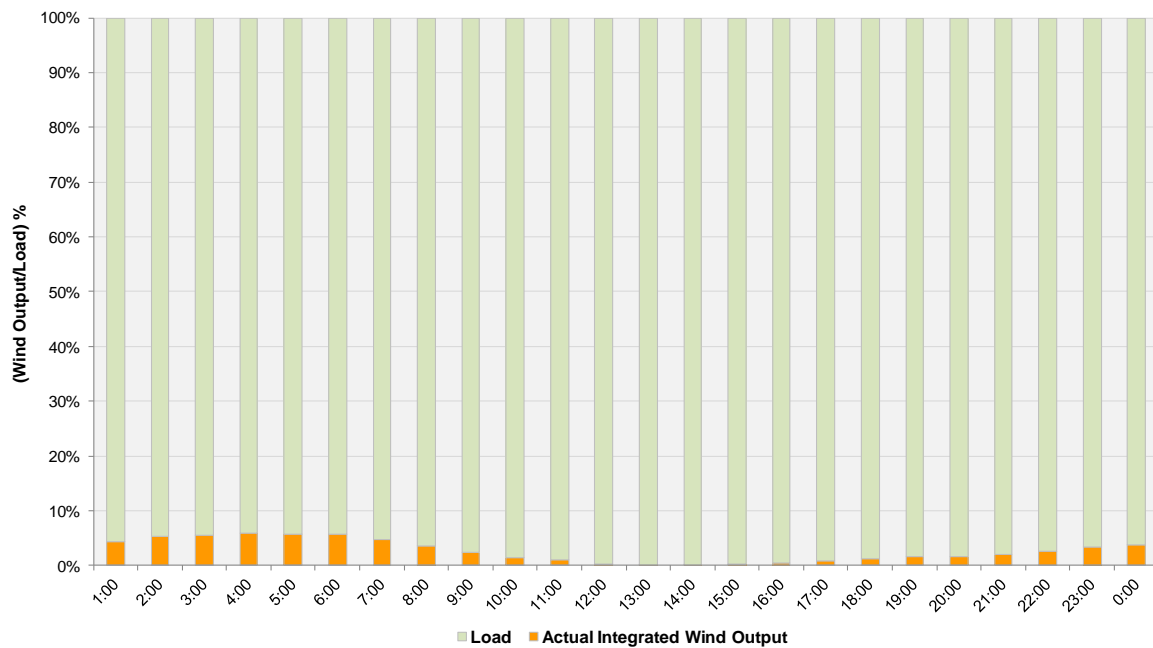
**Hourly Average Actual Load vs. Actual Wind Output  
08-27-2011**



**Actual Wind Output as a Percentage of the Total Installed Wind Capacity**  
**08-27-2011**



**Actual Wind Output as a Percentage of the ERCOT Load**  
**08-27-2011**



ERCOT Load vs. Actual Wind Output 8/20/2011 - 8/27/2011

